

Alwan ColorHub- Version 5

4. Convert to Black Only Queue

Purpose

This tutorial will lead the participant through the configuration of a queue to color convert RGB and CMYK elements into Black only for a digital press which avoids extra click charges (non billable) because the file was provided in color.

Benefits

This Queue saves money by automatically fixing supplied color customer files destined to print Black only on a digital press, which will save three extra clicks on every page. These extra clicks can cost a printer a lot of additional money that they cannot bill for. This Queue will also greatly improve the quality of your black and white printing through this queue because it represents the actual black dot gain (tonality) of the device on the given substrate. This Queue is also very useful for newspapers that want to automatically convert files to Black only for pages that will not be reproduced in color.

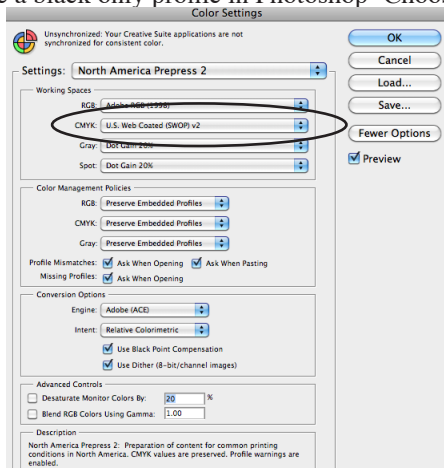
Goal

This tutorial will walk the user through creating a new queue which will convert all files to Black only usage automatically.

Pre-Requisites

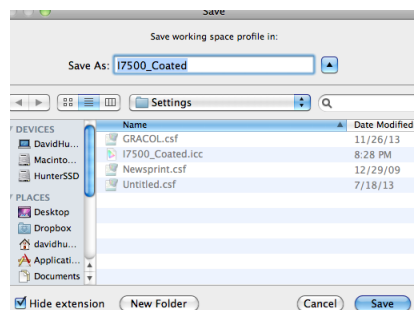
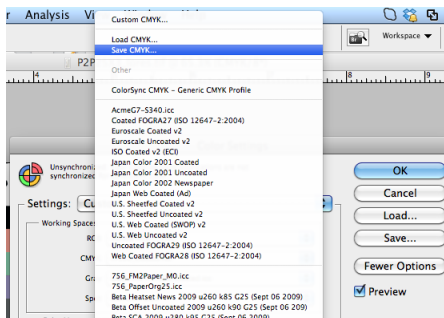
You need to have a Black only profile for your device which represents the Black tonality of the device. If you have a CMYK profile of your device, you can create a new “black only” profile through Photoshop.

To create a black only profile in Photoshop- Choose EDIT Menu and then “Color Settings”

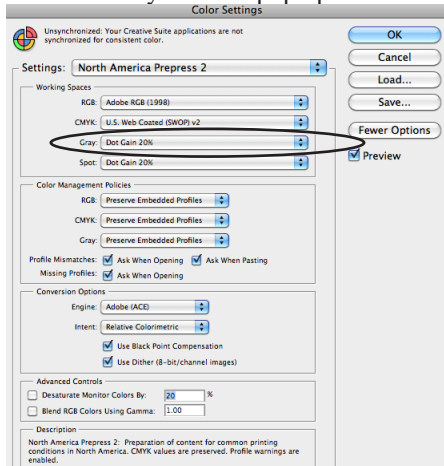


Next select the “CMYK Working space profile” Output Color Profile.

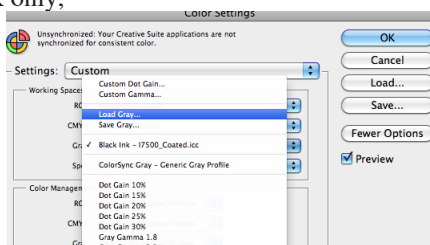
Next select your “Desired Black Only Profile,” in the CMYK pop up menu and go all the way to the top and choose “Save CMYK.”



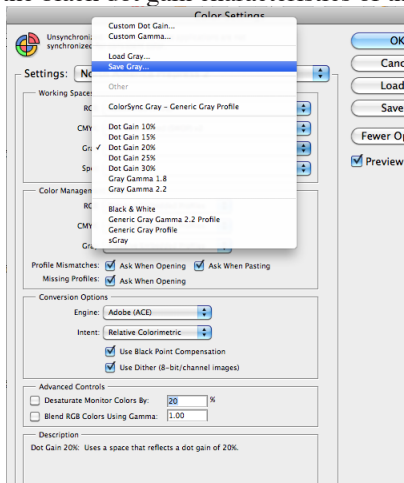
Next, choose the “Gray Profile” pop up menu



Choose “Load Gray,” and choose the CMYK Profile that you just saved for your digital device. Photoshop will load this profile in as Black only,



Now choose the “gray pop up” and select “Save Gray” and save this profile into your profile directory. This profile represents the Black only channel of the digital press and can be accessed by Alwan ColorHub to convert out to a black only profile that represents the black dot gain characteristics of the digital press.



Launch Alwan ColorHub

Enter the activation code if necessary to run ColorHub in Trial Mode (no loss of functionality)

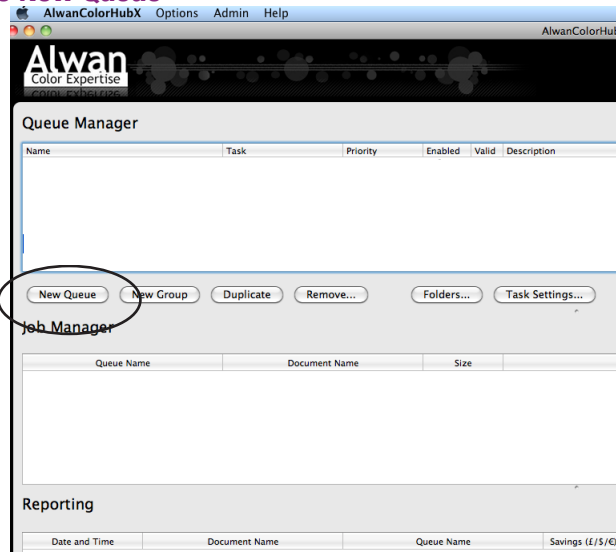
Go to Admin pull down menu

Choose “Enter Demo License”

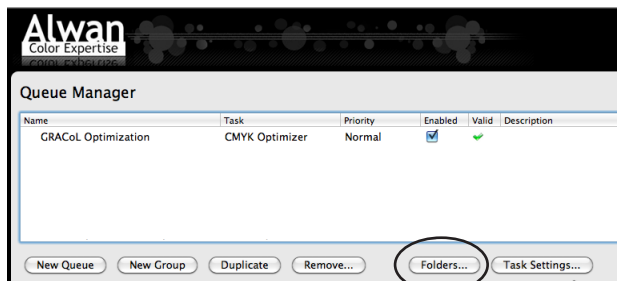
Copy and paste license code into this dialog. License codes are date stamped, they are only good for a short period of time 1-4 weeks.

And the code only works for a maximum of 60 days once the software is activated, only activate when you know that you will have time to test.

Click on “Create New Queue”



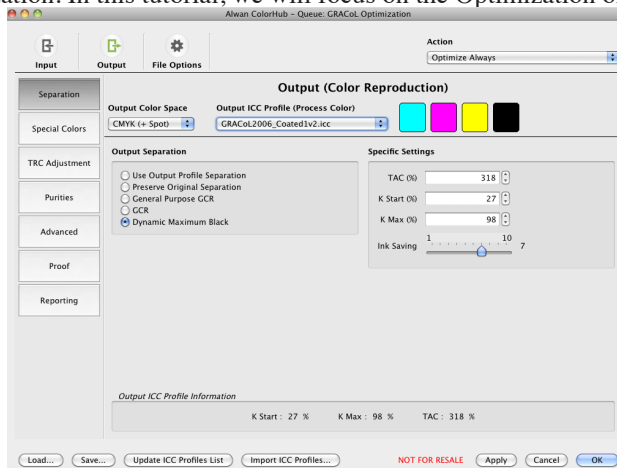
Double click on the name in the Queue window and rename it to “Convert to Black”



Next Click on the button called “Folders,” for testing purposes make a folder on Desktop called GRACoL Input, and choose to include all other folders inside your main input folder. You can always change the folder structure later to accommodate your workflow. Click the check box next to the Original Folder, this will automatically make a copy of your file, so you do not need to worry about overwriting original file while testing.

Click on “Task Settings” button-

This opens the heart of the ColorHub Interface. ColorHub performs two main functions, first Color Conversion and the second function is optimization. In this tutorial, we will focus on the Optimization of ColorHub settings.



Click on “Load” button on bottom left side of menu

Load a Pre-Set Configuration which will populate all the optimum settings to provide accurate color conversions. All you need to do to get started is to make sure the Output Profile setting is relevant to your actual output condition. Most other settings can remain as default, read on to learn about more about the capabilities of Alwan ColorHub.

Click on “Load” button on bottom left side of menu

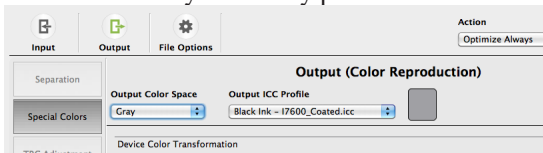
Load a Pre-Set Configuration which will populate all the optimum settings to provide accurate converting to Black only. You still will need to load your custom black only profile to complete this tutorial.

Output Settings

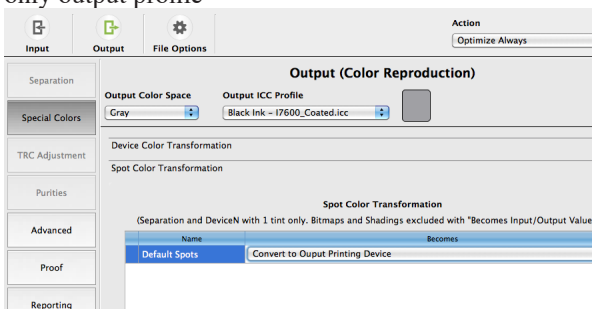
Customization of the Black Only Conversion settings

Special Color Tab


Select GRAY and choose your K only profile

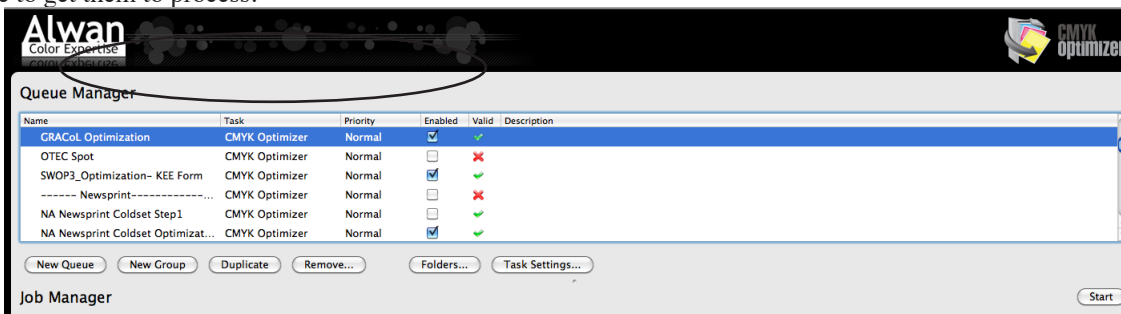


Click on the check box to convert all Spot Colors, this will convert any spot colors to the appropriate shade of gray based on your black only output profile



Finalize Queue

Make sure you have a green check mark  next to your queue showing you that it is valid, then click on the START button on the far right side of the Job manager to start processing files that go into the job folder. You can also drag and drop PDFs on to the Queue to get them to process.



You are ready to start “Convert to Black Only” your color files.